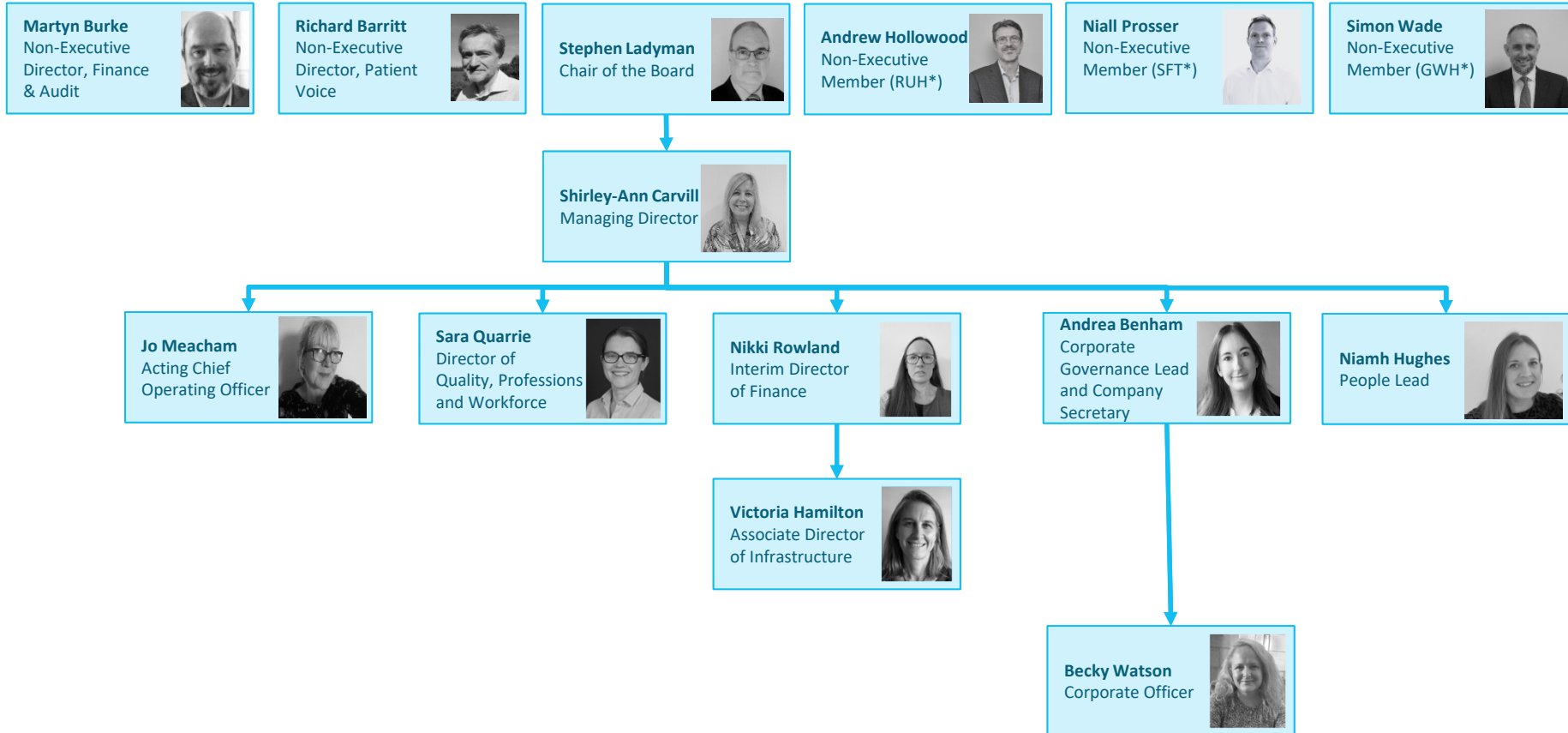


## Wiltshire Health and Care's Board, Executive Team

Last Updated: July 2024



\*RUH: Nominated by Royal United Hospitals Bath NHS Foundation Trust  
 \*SFT: Nominated by Salisbury NHS Foundation Trust  
 \*GWH: Nominated by Great Western Hospitals NHS Foundation Trust