

Wiltshire Health & Care Governance Structure

This diagram shows key governance meetings at Board, Committee, Executive and Corporate Directorate level along with levels of assurance, escalation and risk.

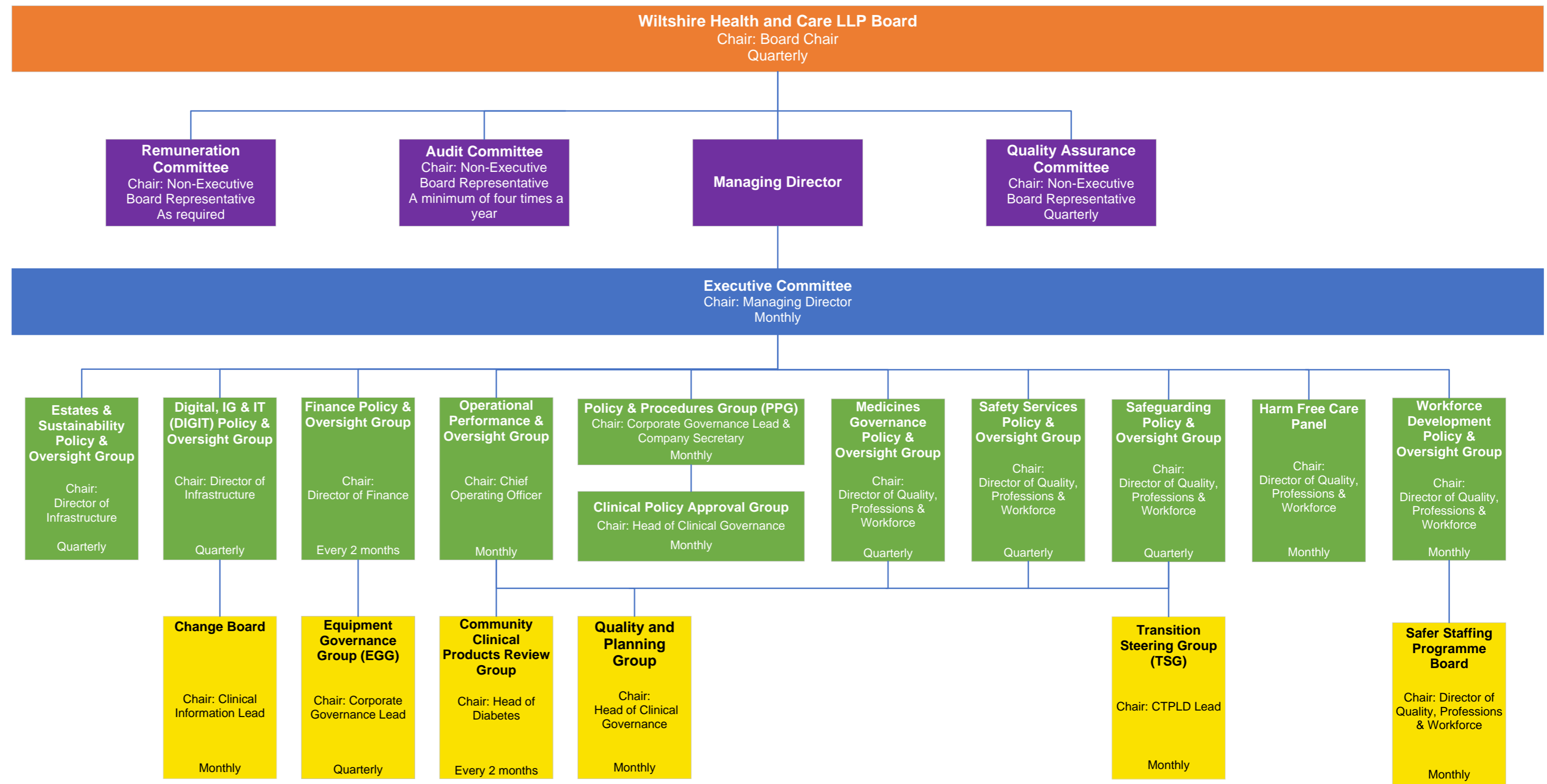
Tier 1 - Board level accountability - Receives assurance, provides challenge.

Tier 2 - Non-executive scrutiny - Seeks assurance, escalates risk to Board.

Tier 3 - Strategic leadership - Ultimate operational decision making, holds to account for delivery.

Tier 4 - Operational management - provides assurance and challenge, escalates risks and issues.

Tier 5 - Service level delivery - Provides information and assurance.



WHC Networks

Wellbeing Forum
Chair: HR Business Partner
Quarterly

E, D, & I Forum (staff, volunteers)
Chair: HR Business Partner
Quarterly

PPI Group
Chair: PPIO
Quarterly